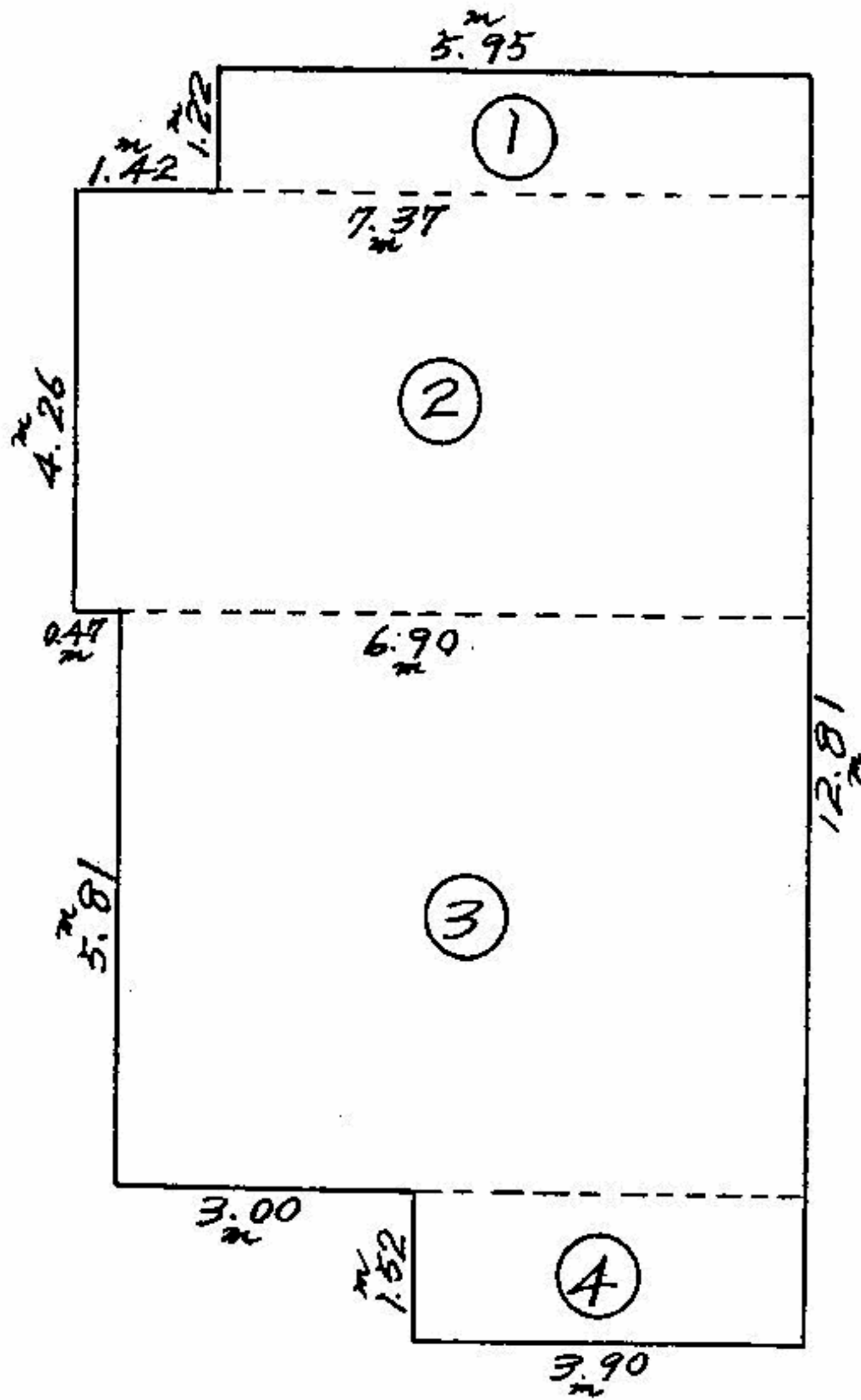


(一階)

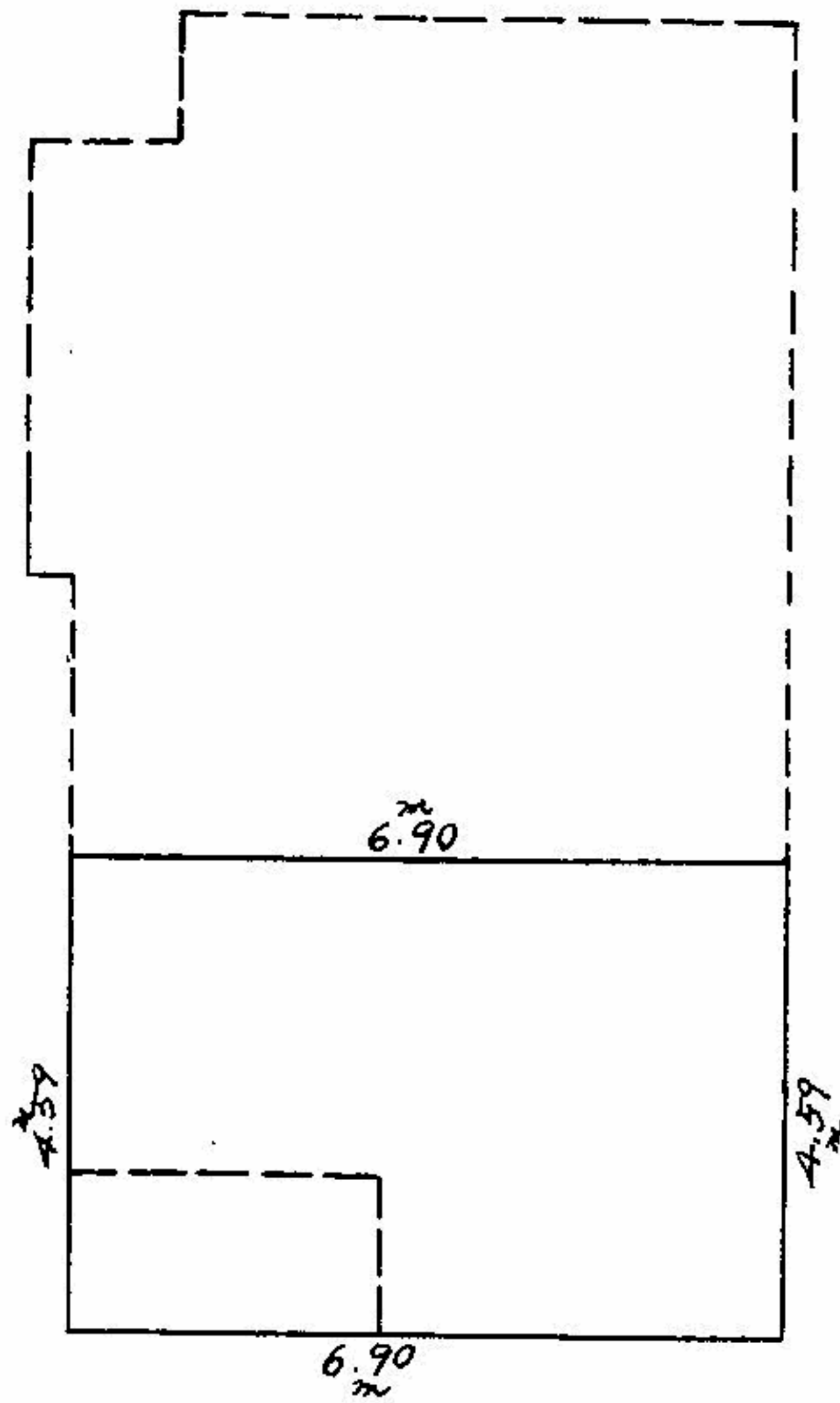


①	5.95	x	1.22	=	7.259
②	7.37	x	4.26	=	31.3962
③	6.90	x	5.81	=	40.089
④	3.90	x	1.52	=	5.928

(一階)

84.6722

(二階)



$$(二階) \quad 6.90 \times 4.59. = 31.671 \text{ m}^2$$